

Import Parameters for Deviated Wells  
Sample Along Wellbore  
Interval 200  
Production Curve Average  
Start At <Zone Top>

**GVERSE®**  
**GeoGraphix®**  
Potential to Production



# GEOATLAS

## Integrated Geological Mapping

GeoGraphix® is a registered trademark of Landmark Graphics Corporation. GVERSE® is a registered trademark of LMKR. LMKR Holdings is the exclusive world-wide licensor and distributor of GeoGraphix® software.

# A COMPLETE GEOSCIENCE PLATFORM



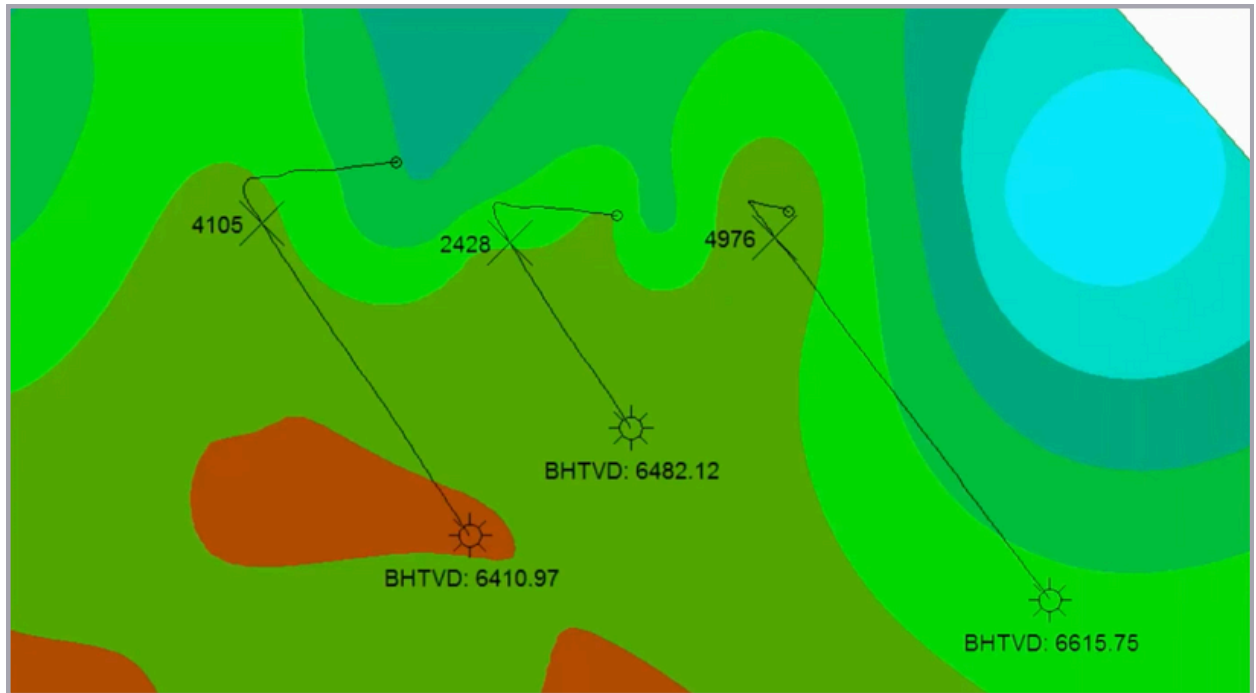
## Streamline Exploration and Production Workflows

Our comprehensive GVERSE GeoGraphix solution integrates geological, geophysical, petrophysical, and data management tools allowing geoscience teams to collaborate and make rapid, accurate decisions.

**GeoAtlas** is a GIS-based, mapping environment for geologic base and subsurface mapping. Built on Esri ArcObjects technology, GeoAtlas is used to create presentation-quality maps from a variety of spatial data sources including shapefiles, web map services (WMS), ArcGIS map services and SDE layers.

# Advanced Geological Mapping for Informed Insights

*Faster, Presentation-Quality Geologic Maps*



## Key Benefits

### Presentation-Quality Geologic Maps

GeoAtlas enables geoscientists to create and print extremely high-quality, geologic maps using a wide variety of standard geological and custom-created symbols.

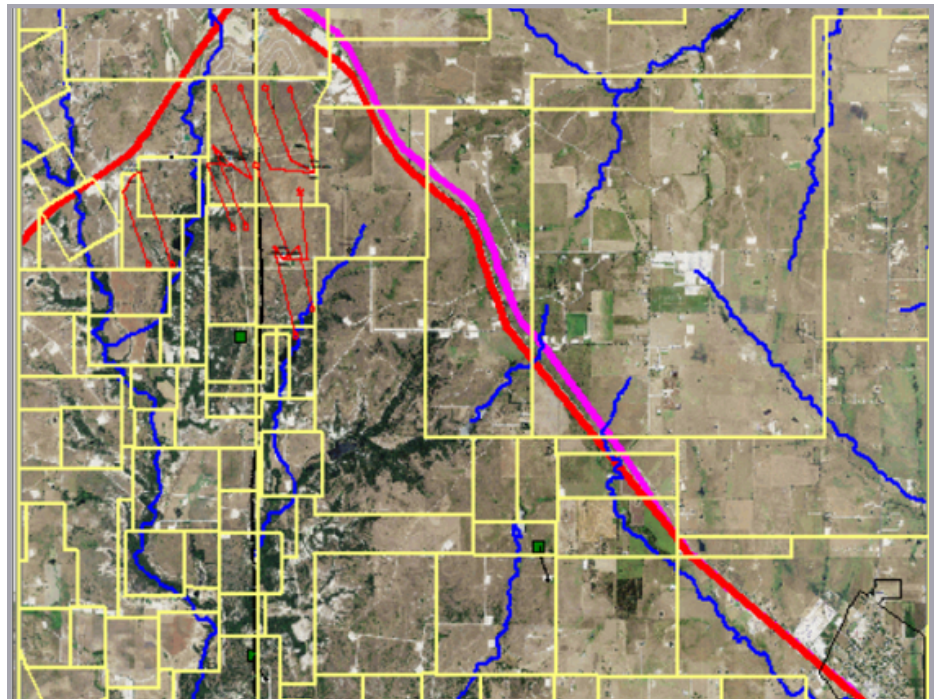
### Esri Integration

GeoAtlas is built on Esri ArcObjects technology. The native map format in GeoAtlas is the shapefile, and integration with other Esri technologies such as ArcGIS Map Services and SDE provides unparalleled interoperability with Esri tools such as ArcMap.

## Key Features

### Base Mapping

- Display well spots, land grids, satellite imagery and any one of eight, different layer types to create high-quality base maps.
- Modify map attributes and add drawings, objects, and annotations.
- Subset map and prospect areas using Areas of Interest (AOIs).
- Thematically map on any attribute posted on the base map.
- Spot well locations from footage calls individually, and in-batch.
- Use Layer Display Attributes to gain complete control over all display properties.
- Construct montages displaying maps and cross sections, as well as inserted text and graphics files defined in other applications.
- Generate production bubble and pie maps.
- Mine project data graphically using conditional pie mapping on almost any field in the project database.
- Import shapefiles.
- Create custom coordinate systems as a result of GeoAtlas' support of practically every datum and map coordinate system worldwide (using Blue Marble Geographics geodetic libraries).
- Print presentation maps to any size and scale.

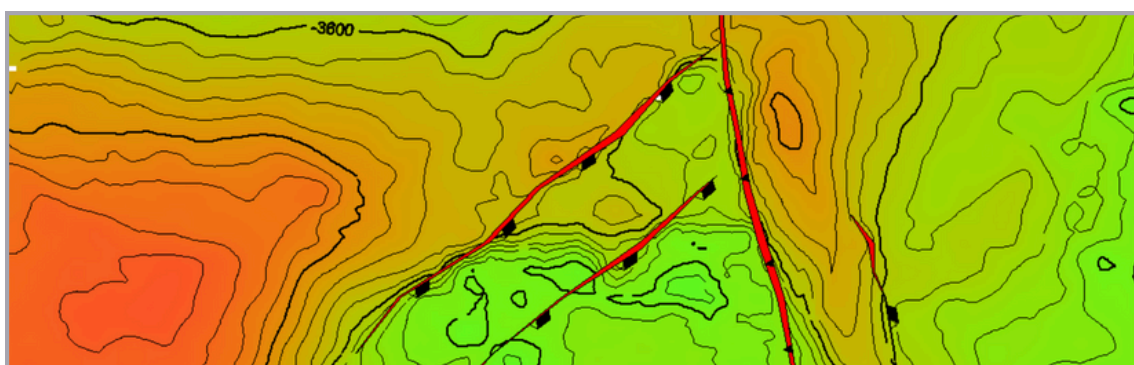


## Contour Mapping

- Create subsurface map layers using one of ten different gridding algorithms.
- Edit contours.
- Honor faults when creating subsurface contour maps.
- Create Isopach and Isochore maps.
- Perform grid-to-grid operations and contour-to-grid operations.
- Create subsurface contour maps from well data, zone attributes, ZMAP+, ASCII XYZ, Digital Elevation Models (DEMs) and existing shapefile layers.

## Volumetrics

- Calculate volume and Area Statistics from contour maps.



**Volume and Area Statistics**

Volume and Area   Oil Reserves   Gas Reserves

Grid Selection

Area of Interest : 3D Survey Area

Source Grid : K4b Horizon, Time Structure Map

Grid Type : Thickness Map

Polygons Available for Calculations

	Polygon Entities	Include	Name for Report	Area	Volume
1	Fault Polygon	<input checked="" type="checkbox"/>	Fault Polygon	17.00	132139459.45
2	Contour	<input checked="" type="checkbox"/>	-3740 Contour	1.93	15872989.78
3	Contour	<input checked="" type="checkbox"/>	-3740 Contour	0.46	3768302.49
4	Contour	<input checked="" type="checkbox"/>	-3720 Contour	6.54	53514522.53
5	Contour	<input checked="" type="checkbox"/>	-3700 Contour	0.99	8012625.03
6	Contour	<input checked="" type="checkbox"/>	-3700 Contour	23.87	193850917.70
7	Contour	<input checked="" type="checkbox"/>	-3700 Contour	0.03	225940.42

Calculation Options

☒ Use Splined Entities for Calculations   ☐ Estimate with higher accuracy

Statistics

Total Area : 57.65   Acres

Total Volume : 462151688.07   Barrels

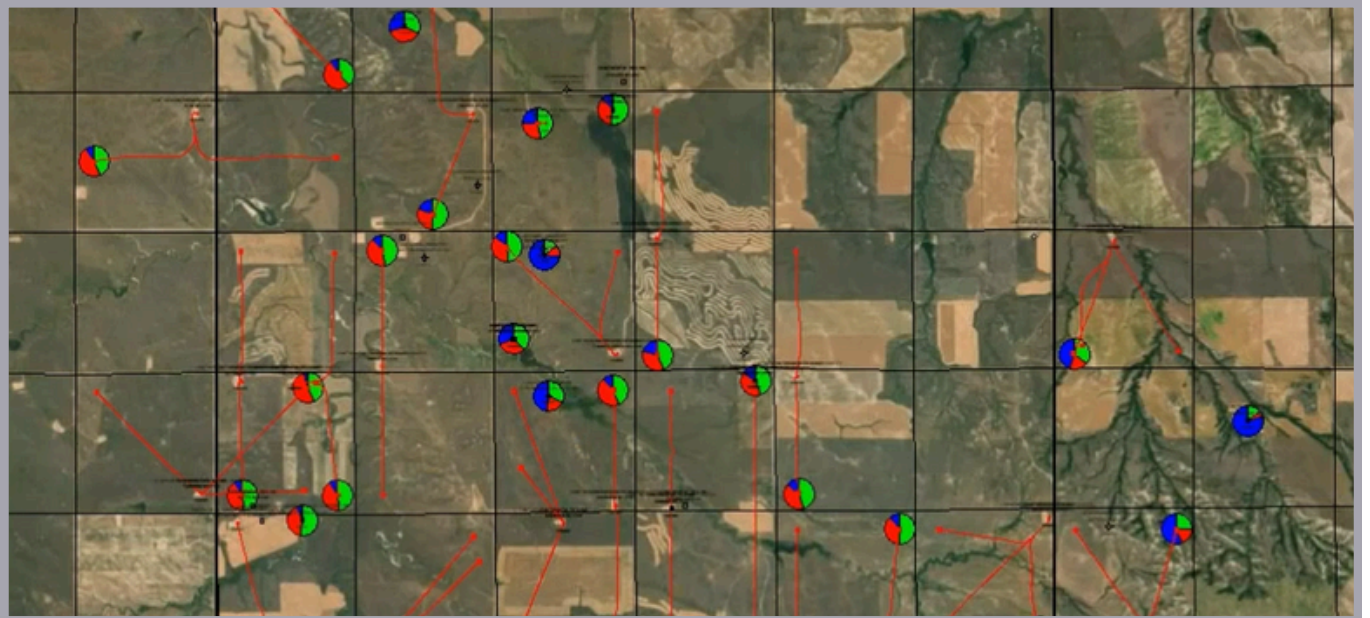
Format Options

2   Number of decimal places   ☐ Use Scientific Notation   Column Options



## ArcGIS

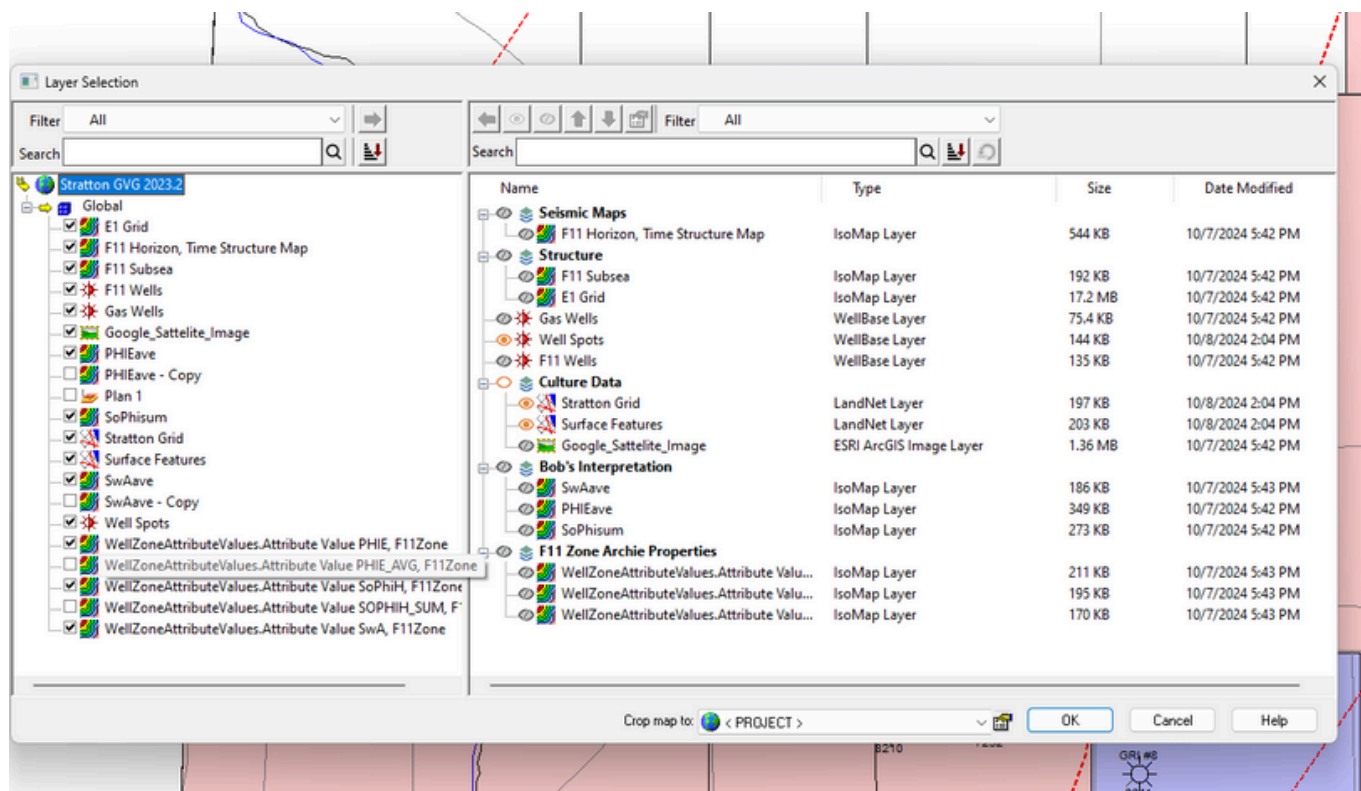
- Stream Web Map Service (WMS) layers onto GeoAtlas maps.
- Import layer (.lyr) files.
- Stream ArcGIS map service onto GeoAtlas maps.
- Display layers from SDE (Spatial Data Engine)
- Publish GeoAtlas map layers to ArcGIS Online.



## Release Highlights 2024.1

### Enhanced Layer Management and Search Functionality

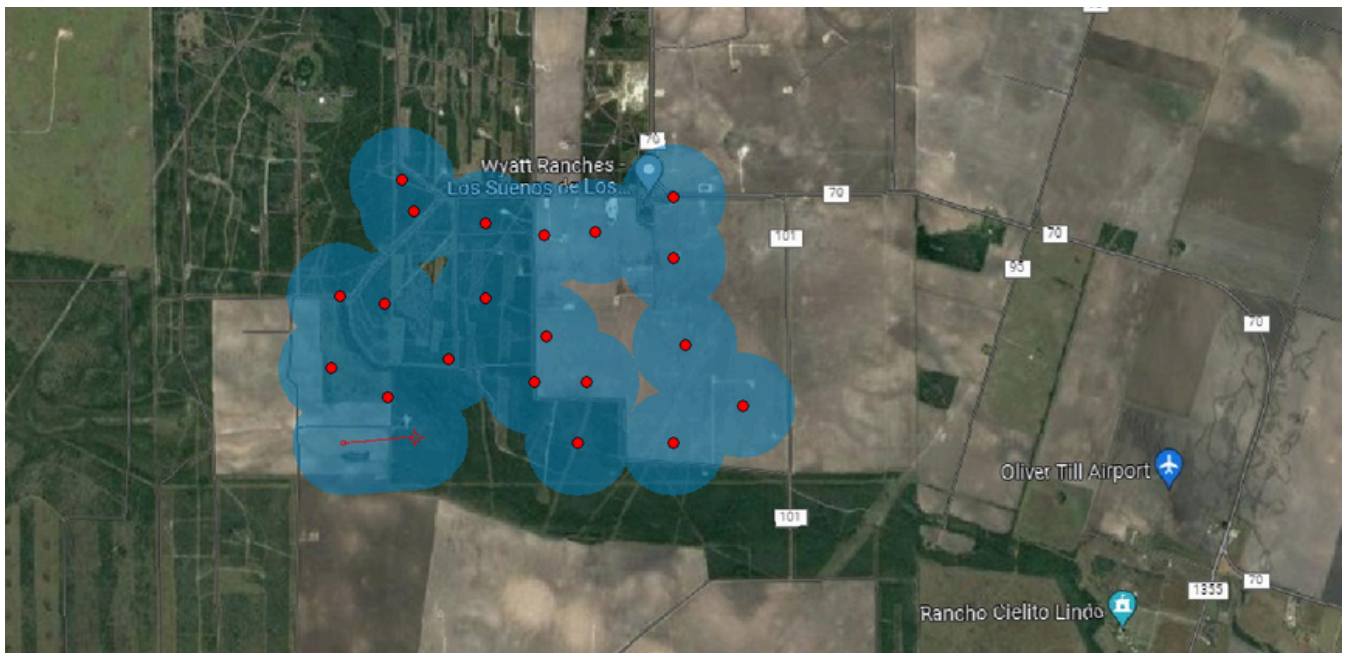
Quickly locate and manage layers with new search capabilities in the Layer Selection dialog and expanded Layer Stack support, streamlining complex mapping workflows.



## Release Highlights 2024.1

### Efficient Map Customization and Navigation

Adjust well highlight color and size, draw distance buffers, and seamlessly undo or redo changes to layer visibility—making map customization more intuitive and precise.



### Tools for Advanced Spatial Analysis

Measure distances with the cursor spotlight tool and toggle between coordinate reference systems with a hotkey, enabling rapid, precise location analysis across projects.



## Technical Specifications

The following sections list the system requirements for the GeoAtlas:

### Minimum

- 2.4GHz 64-bit Intel class or better
- 4 GB RAM
- 1,024 x 768 graphics resolution
- 19-inch monitor

### Recommended

- Quad 2.4 GHz 64-bit Intel class or better
- 16 GB RAM or greater
- NVIDIA GeForce or Quadro – 2GB VRAM
- Dual 21+ inch monitors

### Software

- Microsoft® .NET 4.5
- Microsoft DirectX 11

**Note:** *It is recommended to use the latest Microsoft® service packs and security patches.*

### Operating System(s)

- Windows® 10 Professional x64
- Windows® 10 Enterprise x64
- Windows® 11 Professional x64
- Windows® 11 Enterprise x64

### Licenses

*The following licenses are required to run the application:*

- GVERSE GeoGraphix license version 2024.1
- GeoAtlas license version 2024.1
- License Management Tool 2024.1